



Customer: Pullman Court Management Co. Ltd.
Consultant: Prior Estates Ltd.
Project: Complete External Decorations of Pullman Court
Address: Streatham Hill, London, SW2

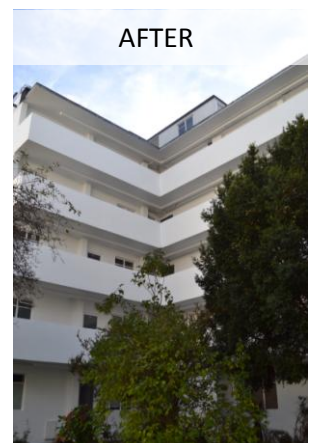
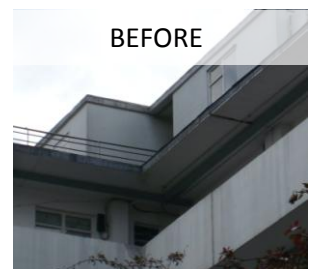
In 2013, Alfred Bagnall & Sons (Restoration) Limited secured the contract for complete external redecoration of all blocks at this Grade II listed 1930's design residential development, to an Akzo Nobel Glidden specification.

Pullman Court consists of 218 dwellings across 3 blocks ranging from 3 - 7 storeys. Due to the varying shapes and heights of the buildings Bagnalls' access solutions included scaffold, mobile towers, suspended power cradles and cherry pickers to safely reach all elevations.

Works commenced May 2013 and careful planning between the residents, Prior Estates and Bagnalls was key to establishing a bespoke programme of works which minimised disruption to the residents whilst maximising productivity.

Our site foreman acted as an in and out of hours liaison communicating to residents information regarding dates of specific works, the type of access being employed and instructions for window painting. Our working patterns were adapted to fit in with requirements of night workers, residents receiving deliveries or any health and safety considerations. We also held an informal coffee morning on-site to offer residents the opportunity to voice any concerns and receive updates on our progress.

Prior Estates' Director praised the consideration of our site team saying, *"I cannot speak highly enough of Bagnalls for the way in which this contract has been handled, particularly the coordination between the on-site foreman and the House Manager Konrad Grosse"*.



For further information, please contact our **Restoration Office**
 Tel: **0208 311 3910**
 Or visit our website: **www.bagnalls.co.uk**